



TRAFFORD
COUNCIL



Integrated Children's Services in Trafford





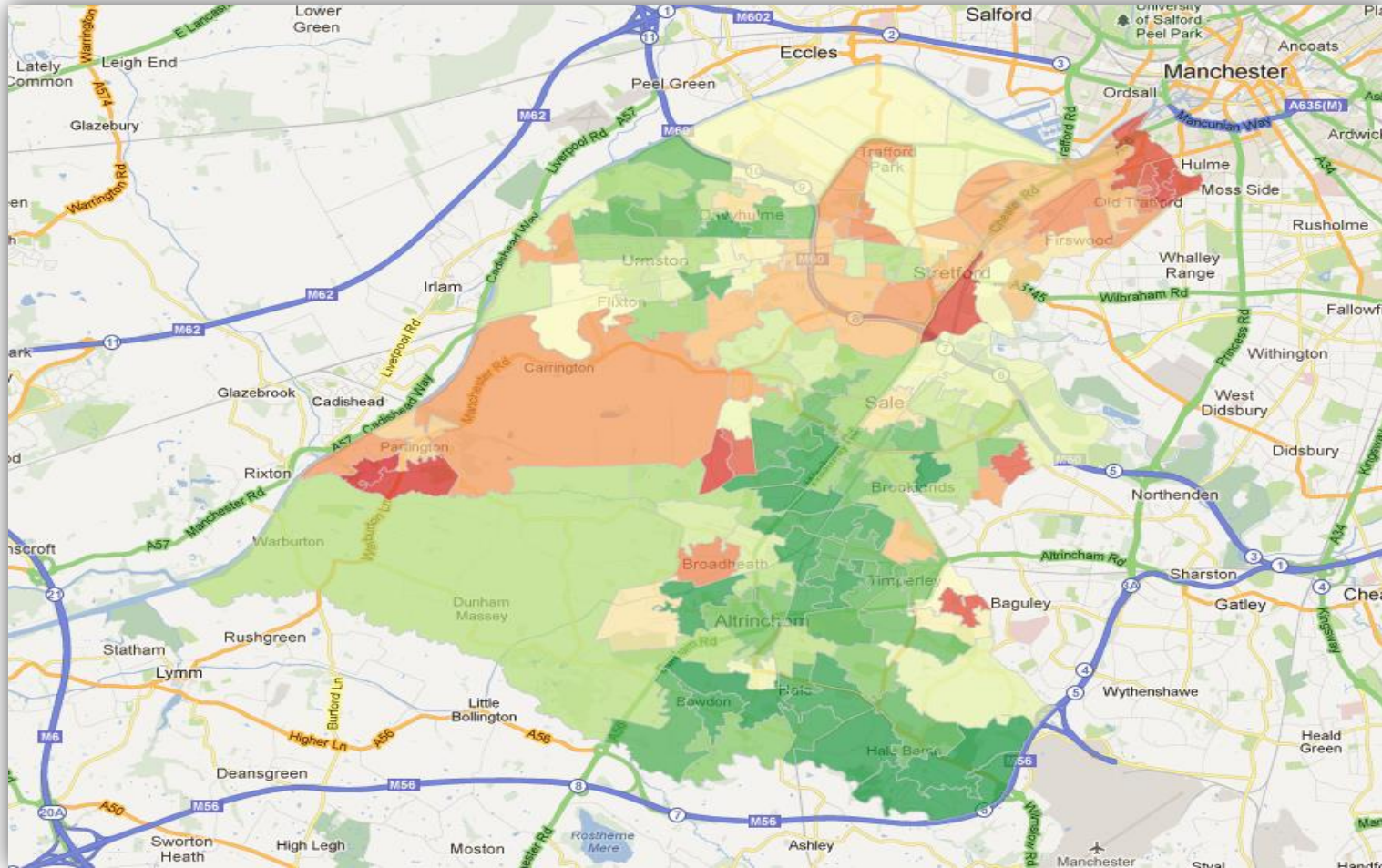
Trafford – The Place

- Trafford is one of 10 metropolitan boroughs of Greater Manchester
- Total Population of 217,000 of which 52,000 are children and young people
- Demographic growth with a 25% increase in 0-5 population between 2001 and 2011
- Increasingly diverse population – 26% of primary and 24% of secondary pupils from BME groups
- Relatively affluent borough with some areas of high deprivation and inequalities
- Diverse communities ranging from inner city wards in the north to wealthy suburbs in the south of the borough
- Major economic base with high profile sporting, leisure and business links
- Exceptionally high levels of educational attainment and lowest NEET rates in the region





Trafford – Deprivation Index





Children's Services – Integrated Model

- Integration with health sector enabled by Section 75 Partnership Agreements
- Multi-Agency Referral and Assessment Team (MARAT) has Social Workers, Police, Health and a Teacher working together. This model has been established for over 5 years and pre-dates the MASH model.
- Children in Care Service includes health professionals (including CAMHS) and the Virtual Head Teacher.
- Area Family Support Teams are fully integrated with social workers, health visitors, school nurses, education welfare officers etc. sitting together and co-working cases.
- Complex and Additional Needs Service pulls together social care and health professionals into one integrated team.
- Key partners;
 - Trafford Council
 - Trafford Clinical Commissioning Group
 - Pennine Care
 - GMP



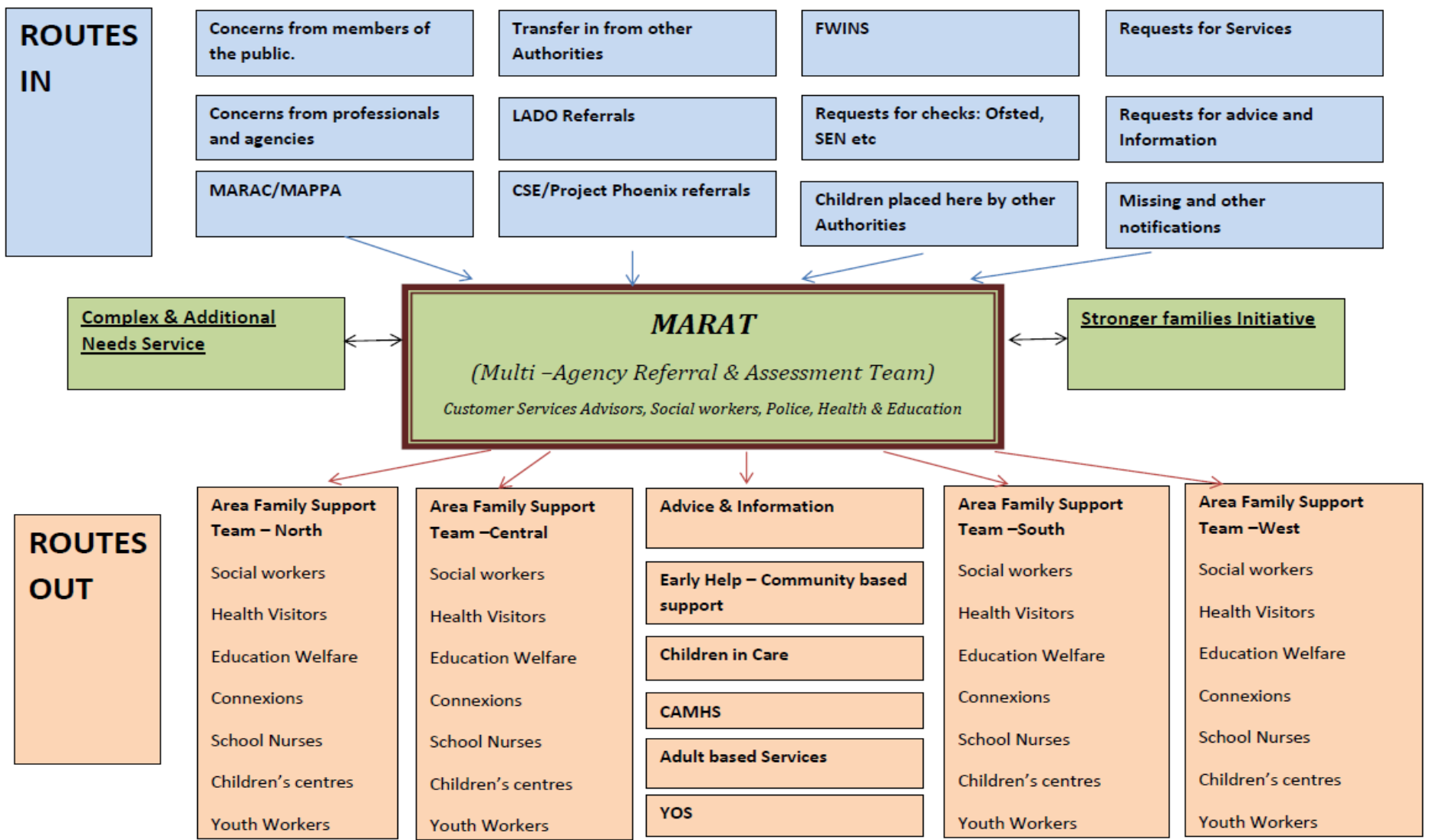


Early Help in Trafford

- Trafford recognises the critical role of integrated Early Help and we;
 - launched our Early Help Strategy in 2013
 - established an Early Help Impact Assessment in summer 2014
 - Introducing a simple Early Help Assessment and find other ways to understand the full range of Early Help offered.
- The CAF is used as a basis for the Stronger Families initiative and by our SCIP (Social Care in Partnership with Schools) social workers (non-statutory).
- MARAT identify referrals where an Early Help approach would be a viable route for support, they give advice and information and the referring agency is offered the support of the MARAT Early Help Lead.
- Our Multi-Agency Area Family Support Teams are a central part of our Early Help offer to families (Children's Centres, Youth Service, CAMHS etc. working alongside statutory services on a neighbourhood basis)
- There is lots of good practice across agencies our aim is to find it, share it and where possible support its co-ordination



Contact, Referral and Assessment in Trafford





Innovation and Excellence

- MARAT has been used as an exemplar by Ofsted - it has been in place since 2010 as an integrated front door to services
- MST has been established for 5 years with funding mainstreamed following evaluation of impact - 93% success rate in avoiding escalation.
- Our CIC placements strategy includes Me2 and KEEP for fostering and KEEP for adoption and has resulted in an increase of in-house placements, better outcomes and reduced unit costs for placements
- As an SEN Pathfinder Trafford has piloted EHC plans and shared learning regionally and nationally and implementation is progressing well
- Personalisation for children with additional needs is well established and an integrated RAS model being established for EHC
- 'Talkshop' has been highlighted as an exemplar by Ofsted and provides targeted interventions for vulnerable young people including CSE, Sexual Health, Substance Misuse and targeted IAG provision





Overall Outcomes

- Educational achievement in the top 5 LA's nationally at all key stages and 94% Trafford pupils attend good or outstanding school
- Attainment of vulnerable groups including FSM and CiC amongst the highest nationally and increasing year on year
- Lowest NEET rate in Greater Manchester
- Breastfeeding rates highest in the North West
- Strong single assessment process – quality and timescales very good
- Excellent placement stability for Children in Care
- Increased family based placements reduced reliance on IFA's
- Local focus of children in care including being placed nearer to home



What did Ofsted say?

EMBARGOED



Next stage of Development

- Further integration – all age and partners (including an all age front door)
- Improving demand management through embedding and enhancing early help
- Building community capacity
- Improving evidence base of outcomes and impacts
- GM Health and Social Care Devolution?

