



# Implementation of Research Governance in Social Care

---

Presentation for 'Getting Evidence  
into Practice' SSRG event  
(Stirling 28-06-04)



# What is Research Governance?

---

- An initiative to enhance the regulation and improve the quality of health and social care research
- Sets standards
- Formalises the responsibilities of all those involved in research



# Context for implementation

---

- Complexity of social care and social care research
  - Stakeholders
  - Funding structures
  - Approaches to research
- Lack of infrastructure
  - Ethics/methods review
  - Volume of research (Case studies)
  - Readiness to meet requirements of RGF (Baseline assessment)



# Implications for implementation

---

- Scope
  - Breadth
  - Depth
- Ethics and methods review
  - Separate systems
  - Power relationships
- SEARIG collaborative approach to Research Governance in social care



# DH implementation plan

---

- Staged approach
  - External
  - Internal
- Inclusive definition
  - Children's services?
  - Types of activities
- Ethics review
  - Local/national focus
  - Uniform framework/accredited approaches



## What Have West Sussex Social & Caring Services Done?

---

- Taken a proactive approach
- Registered as Research Sponsor with DOH
- Developed a policy & procedure re Research Governance which can be adopted at corporate level
- Produced an Application Pack
- Consultation with UCC re Training
- Consultation with UCC & Brighton re contracts
- Raised awareness - leaflet/intranet etc.



# What does it include?

---

- Projects funded from outside the department or authority
- Projects carried out by someone working within the department or authority.
- Work in connection with Best Value reviews
- Any interviews or surveys carried out with users/carers/staff
- Case File Audits
- Student Projects
- Does not include routine collection of management information



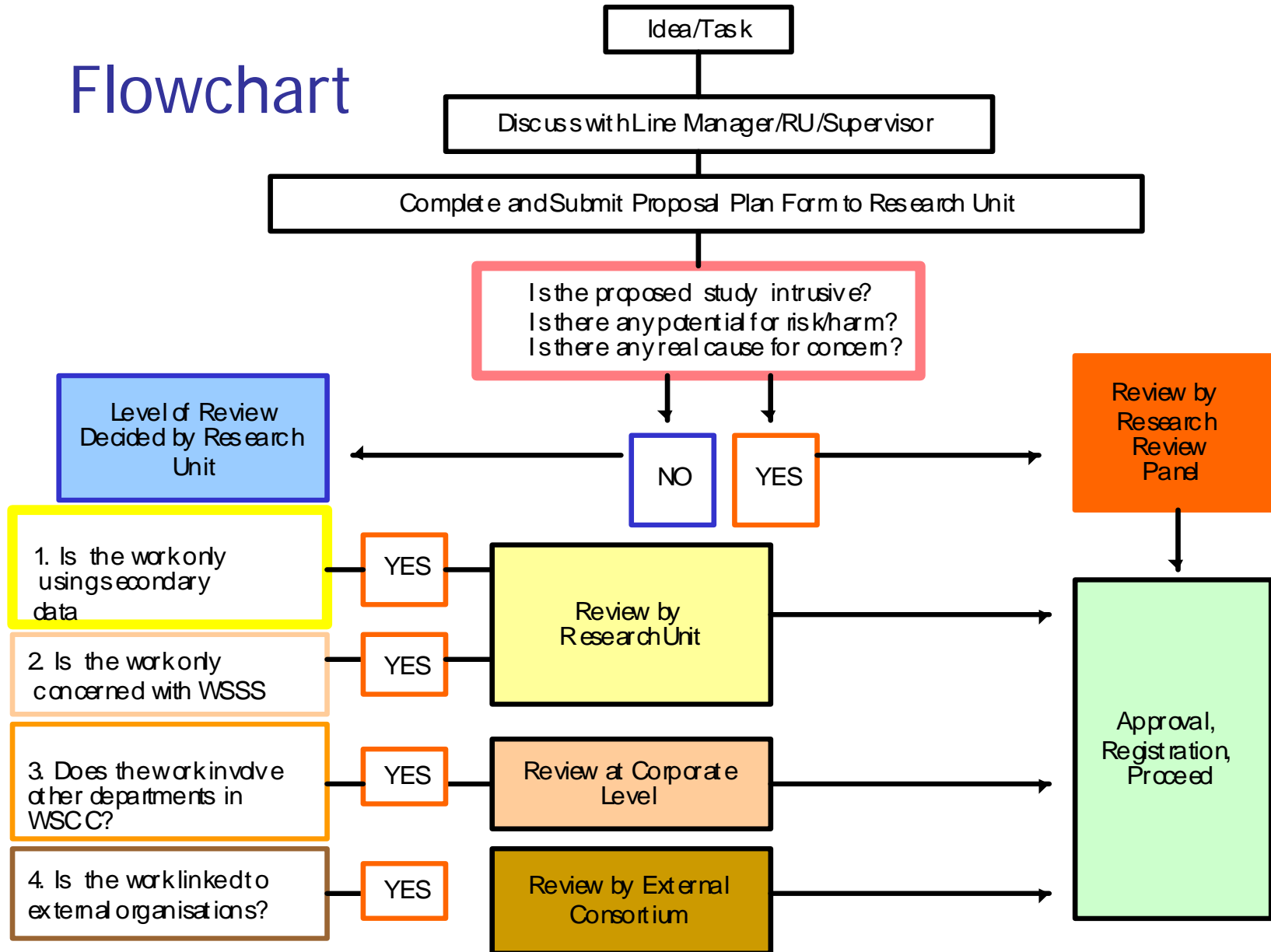
## How does it affect me?

---

- As from March 1st
- Ensure that anyone carrying out/or supervising anyone carrying out any 'research' involving users/carers or staff in West Sussex are aware of our Research Governance policy
- Discuss project with Line Manager/Research Unit
- Submit Project Plan - in application pack
- have plan approved
- have plan registered



# Flowchart





# RGF- Brighton and Hove

---

- Led through Adult Social Care Department
- Corporately supported/welcomed
- Use RIG (Research and Information Group)
- Independent expert reviewers
- Forms/process developed

# What has helped make this happen



---

- RIG already existed
- Simple process
- Relies on skilled people being identified
- seen as good practice



# What has been (is) difficult

---

- Advertising the process
- making the process clear
- IER's anxious about workload
- some feel it may stop work
- not compulsory