

Social Services Publications

- Performance Assessment Framework (PAF) Indicators:
http://www.csci.org.uk/council_performance/paf/
- Key Indicator Graphical System (KIGS):
E-mail: PICSTerms@dh.gsi.gov.uk
- Children's Social Services Publications:
http://www.dfes.gov.uk/cgi-bin/rsgateway/search.pl?cat=8&subcat=8_1&q1=Search/
http://www.dfes.gov.uk/cgi-bin/rsgateway/search.pl?cat=8&subcat=8_2&q1=Search/
- Adult Social Services Publications:
<http://www.dh.gov.uk/PublicationsAndStatistics/Statistics/StatisticalWorkAreas/StatisticalSocialCare/fs/en/>

What if the publications do not include the analysis you want?

- a) Data that is collected but not published

- b) Data that is not collected

Contact Details

Health and Social Care Information Centre (HSCIC):

PAF, KIGS, Finance, Staffing & User Survey - keith.childs@ic.nhs.uk

Adult Social Services - kate.anderson@ic.nhs.uk

Department for Education and Skills (DFES):

Children's Social Services - julie.tillman@dfes.gsi.gov.uk

- ruth.edwards@dfes.gsi.gov.uk

- isabella.craig@dfes.gsi.gov.uk

Technical Working Group (TWG):

Finance, Staffing & User Survey - keith.childs@ic.nhs.uk

Adults - kate.anderson@ic.nhs.uk

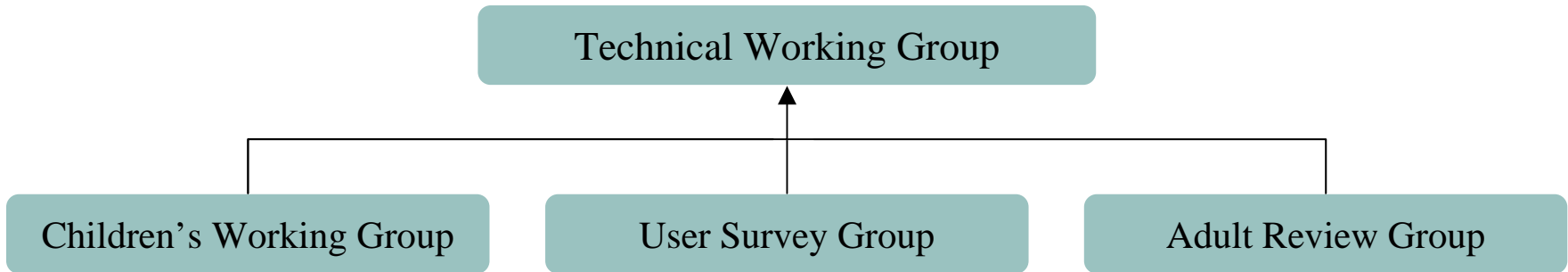
Children - ruth.edwards@dfes.gsi.gov.uk

Technical Working Group

- a) The TWG process and how it works

- b) How do I feed in my views?

Technical Working Group



Questions

1. Do you use the information published by the Departments?
2. How do you use the information?
3. How do Councils share the information?
4. Any questions on the Technical Working Group process?